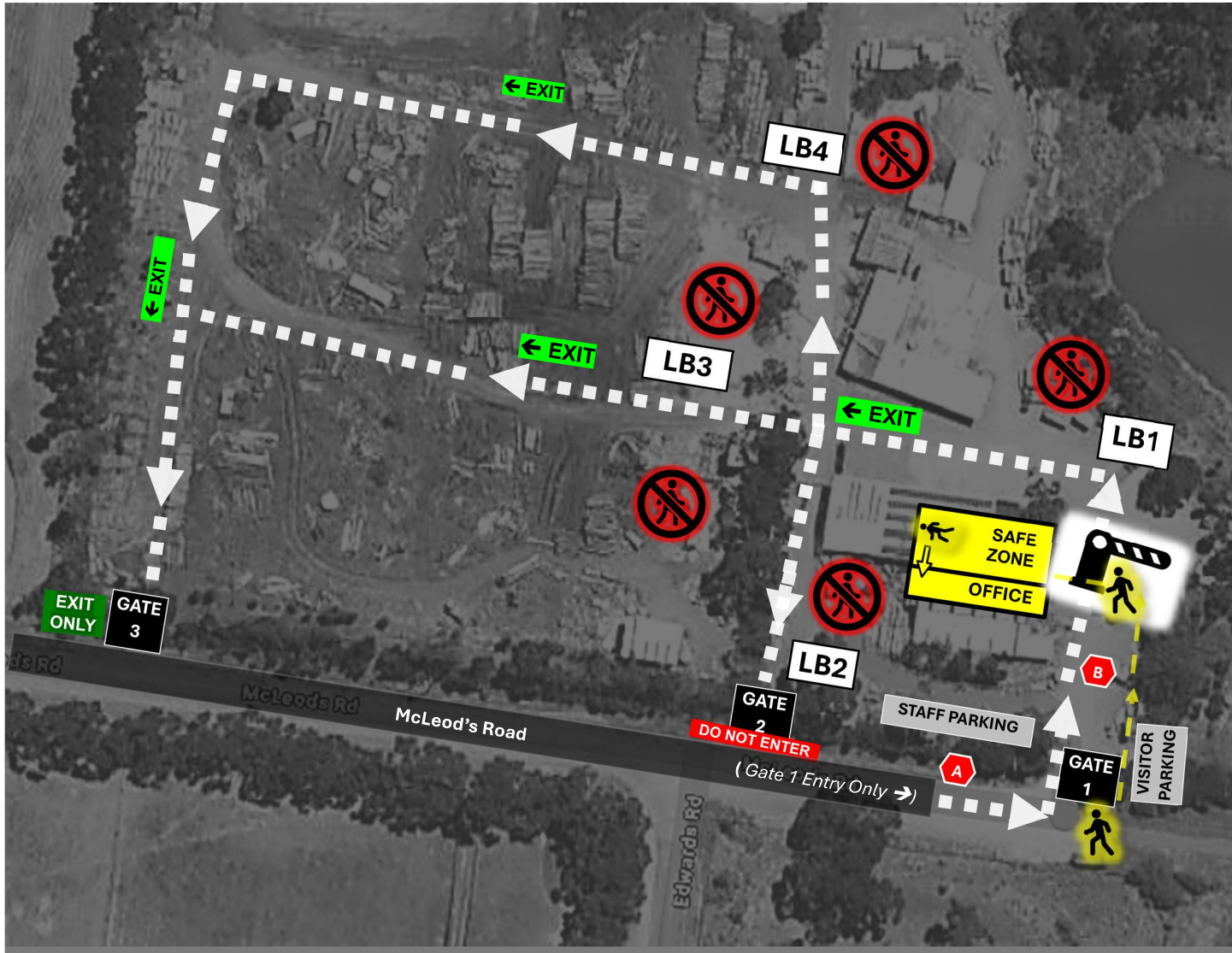


JCS TIMBER – TRAFFIC MANAGEMENT PLAN – VISITOR INFORMATION



SITE ACCESS:



- **SEMI & B-DOUBLE DRIVERS** . DO NOT ENTER SITE. STOP AT **A** (McLeods Rd)
- **OTHER DRIVERS**.ENTER VIA **GATE 1** & STOP AT **B**
- **VISITORS** ENTER VIA **GATE 1** & PARK AT VISITOR PARKING
- GATES 2 & 3 ARE **EXIT ONLY**

ALL VISITORS

- FOLLOW SIGNAGE
- REPORT TO OFFICE VIA YELLOW MARKINGS ON FLOOR
- STRICTLY NO UNACCOMPANIED PEDESTRIAN ACCESS PAST BOOM GATE

LOADING/ UNLOADING

- STOP AT LOADING BAY STOP SIGN
REMAIN IN VEHICLE & WAIT FOR DIRECTION FROM STAFF.
- CALL **03 9740 1653** IF LOADING BAY IS NOT ATTENDED TOO (>15 MINUTES).
- WHILE BEING LOADED, TURN VEHICLE OFF (KEYS OUT OF IGNITION). STAFF WILL DIRECT YOU TO WAIT IN A SAFE AREA. LISTEN TO STAFF DIRECTIONS

 SMOKING ONLY PERMITTED IN VISITOR PARKING
 NO UNACCOMPANIED PEDESTRIAN ACCESS

 TOILETS LOCATED IN SAFE ZONE

<p>SPEED LIMIT</p> <p>5</p>	<p>FORKLIFTS IN USE</p>	<p>SAFETY VESTS OR HIGH VISIBILITY CLOTHING MUST BE WORN</p>
---	--------------------------------	---